

タイル畳



Tail Tatami



● Constructions

When glue tile tatami mats on the floor, the room is changed to beautiful Japanese style room. Because dimensions of the tile tatami mat are 50cm, the combination with the tile carpet is possible.



● High-durability

The covering is made from chemical fiber, Tile tatami has High-durability and does not change color. When you put tile tatami inside a room, it does not change color for 5 years.

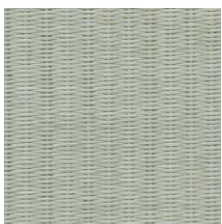
● Good for a person's health

The covering is made from chemical material, you can clean it easy. And mites and molds do not occur in Tile tatami.

Cut by Snap-off knife.

■ COVERINGS

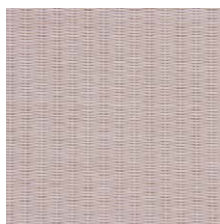
Select your favorite color from the following 3 colors.



Green

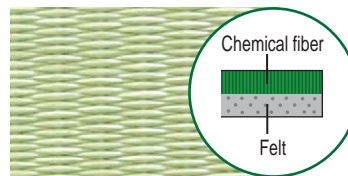


Gold



Pink

■ SPECIFICATIONS



Covering has small weaves.
(Dimensions) 50 cm x 50 cm
(Thickness) 6 mm



Adopt with Wooden frame for wooden flooring room.
(Optional accessory)

■ Tile tatami is suitable for Japanese style hotel, restaurant and so on.

